
Activity Time

The Mote & the Beam / House Built on a Rock

Description: Use these object lessons about the mote & the beam and the houses built upon the rock and the sand to reinforce the lessons Jesus taught in the Sermon on the Mount.

What you need:

- A copy of the "Mote and the Beam" activity, a copy of the "Built Upon the Rock" activity, scissors, tape, rock, sand, washtub or pan

Preparation:

1. Print out the artwork.
2. Place the paper "mote" in the boy's eye with a small piece of rolled tape.
3. Follow directions to put the beam together.
4. Cut out the house artwork.

Activity 1:

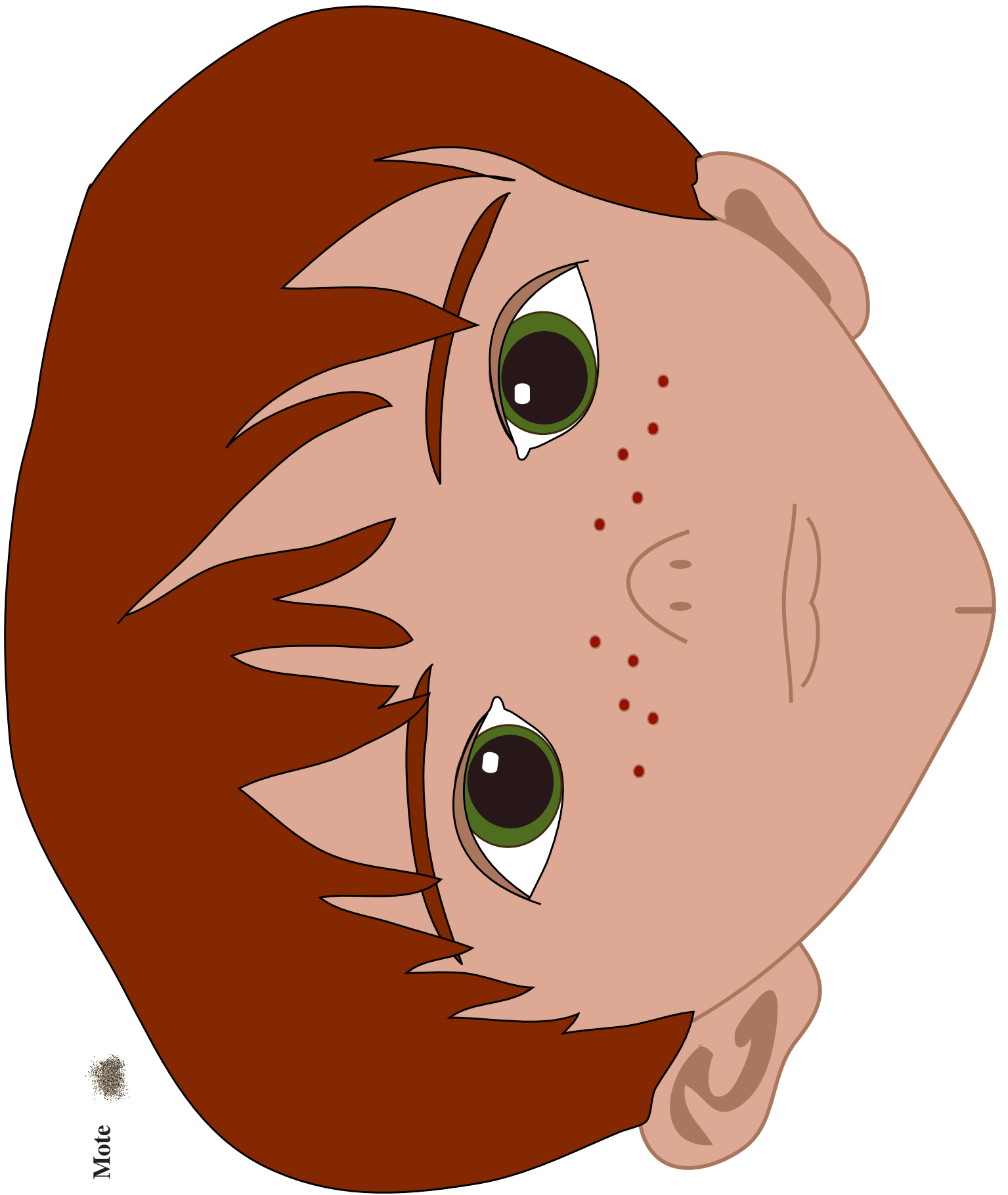
1. Read: Matt 7:3-5
2. Ask: What is a mote? (a tiny piece of something). A mote in someone's eye is like a fault in a person that is less serious than the fault in someone else who is judging the unrighteously.
3. Ask: What is a beam? (a long sturdy piece of wood) A beam in someone's eye is like a fault that is greater in oneself than in the person they are finding fault with.
4. Ask: Have you ever gotten a small piece of dust in your eye? Did it need to be removed?
5. Explain: Jesus knew that sometimes we need help and sometimes we need to help others overcome faults, just like the dust needed to be removed from our eye. (Remove the paper "mote" from the boy's eye.)
6. Ask: If we have a beam in our own eye (hold the paper beam up to your eye) can we remove the mote? (Tape the face on the wall. Tape the paper "mote" back in his eye. Without standing sideways, have each family member try to pull the paper "mote" out of the eye while holding the paper "beam" up to their eye.
7. Ask: Did we look foolish trying to take the mote out of the boy's eye while having the beam in our own eye?
8. Explain: It is foolish to judge other's faults unrighteously while attempting to cover up or hide our own faults. Instead, be humble and recognize and work on overcoming our own faults. Then, with love and compassion, we can help others.



Activity 1:

1. Explain: We are going to build two houses. Before we can build a house, we need to know where we are going to build it.
2. Ask: Where would be some good places to build a house? Where would you NOT want to build a house?
3. Divide the family into two groups and let them each construct a house. The wise man's house is built out of sections 1, 2 and 3, and the foolish man's house is built out of sections 4, 5 and 6.
4. Place the rock and sand in the pan for the foundations. When the houses are complete, tape the wise man's house to the rock and the foolish man's house to the sand.
5. Pour water over the rock and the sand to imitate a flood until the foolish man's house is washed away. Explain that the Gospel of Jesus Christ is the rock and our testimonies are the houses. We want our testimonies to be built upon the rock so they will be like the wise man's house and withstand the storms of life.





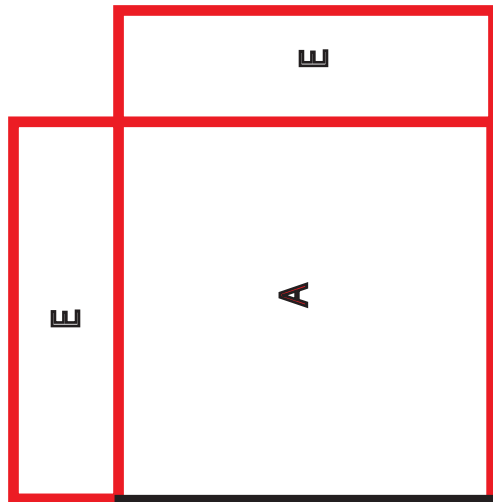
Mote

Cut on dotted lines.
Fold on solid lines.
Tape sections together.

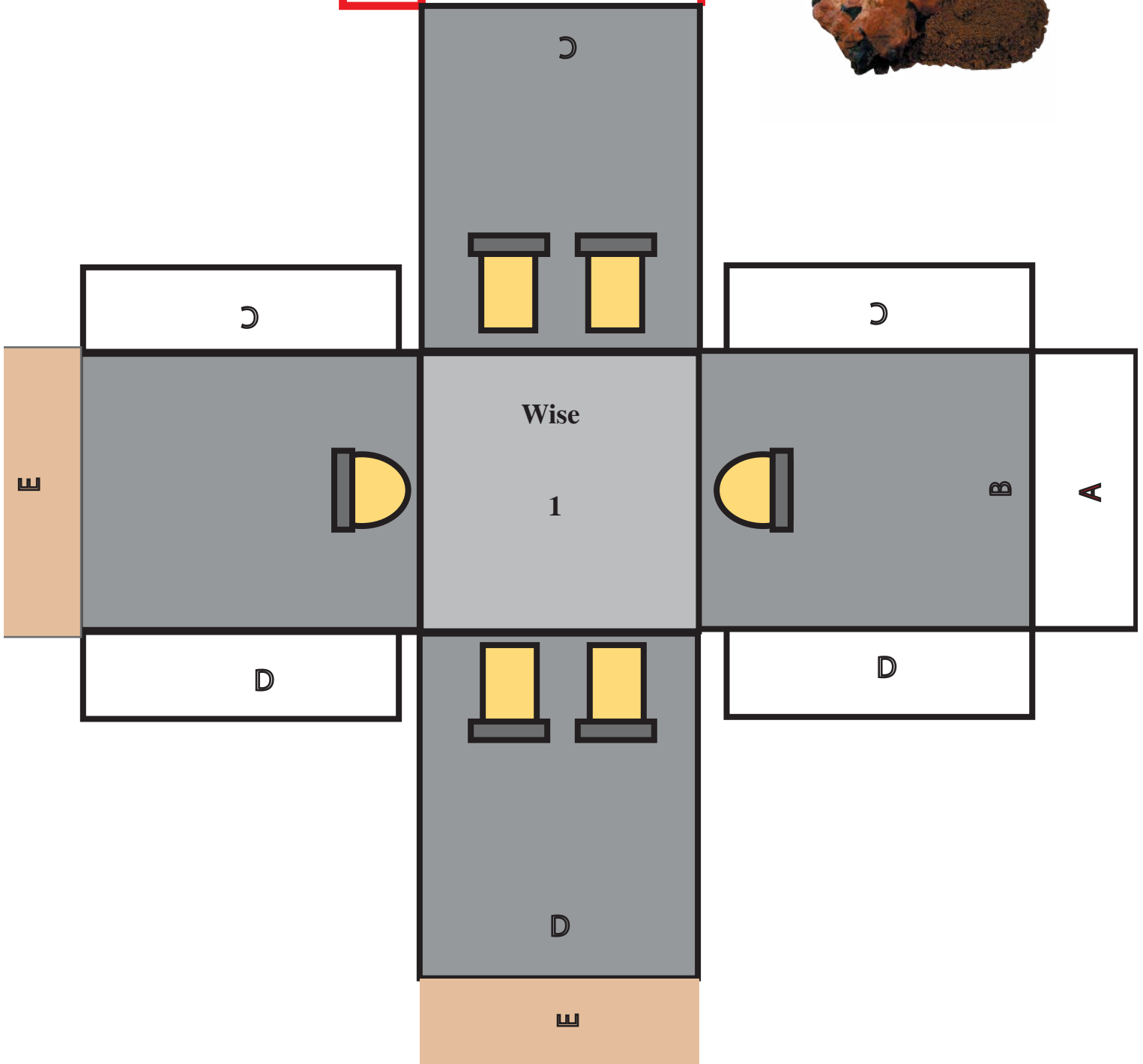




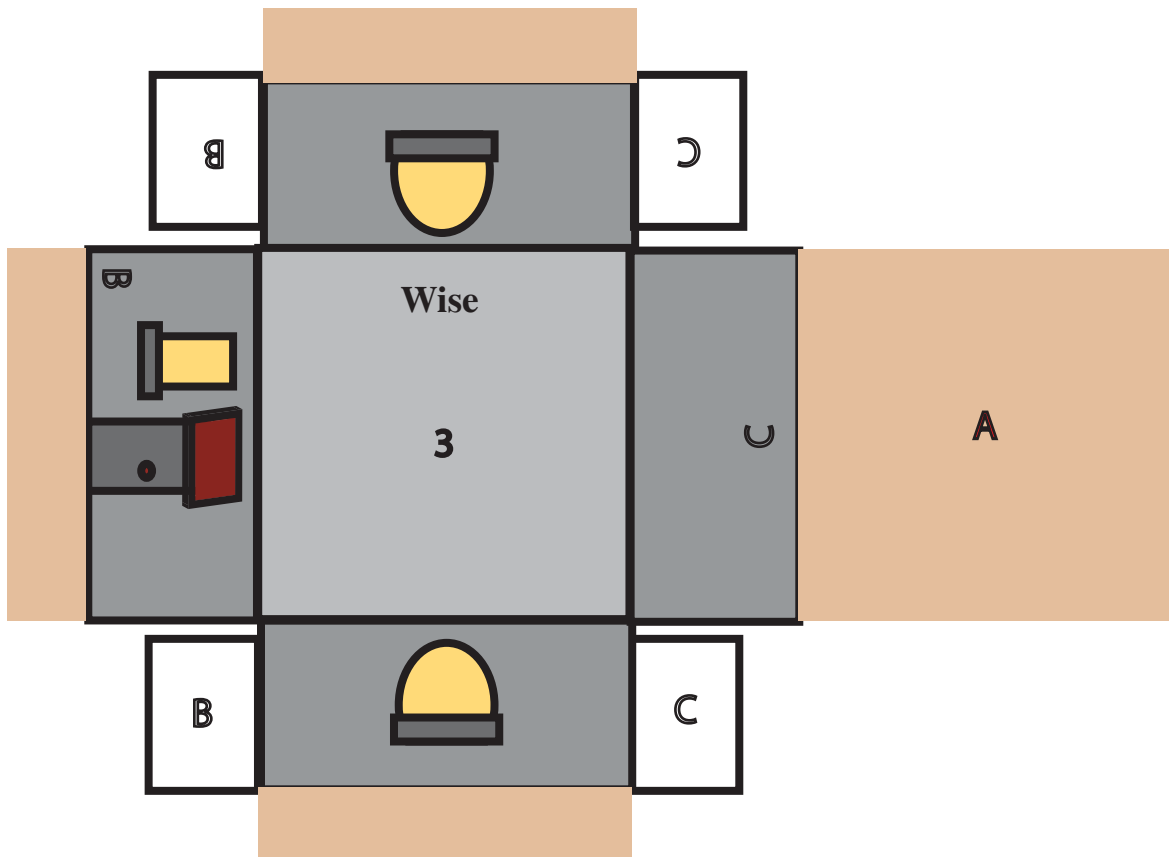
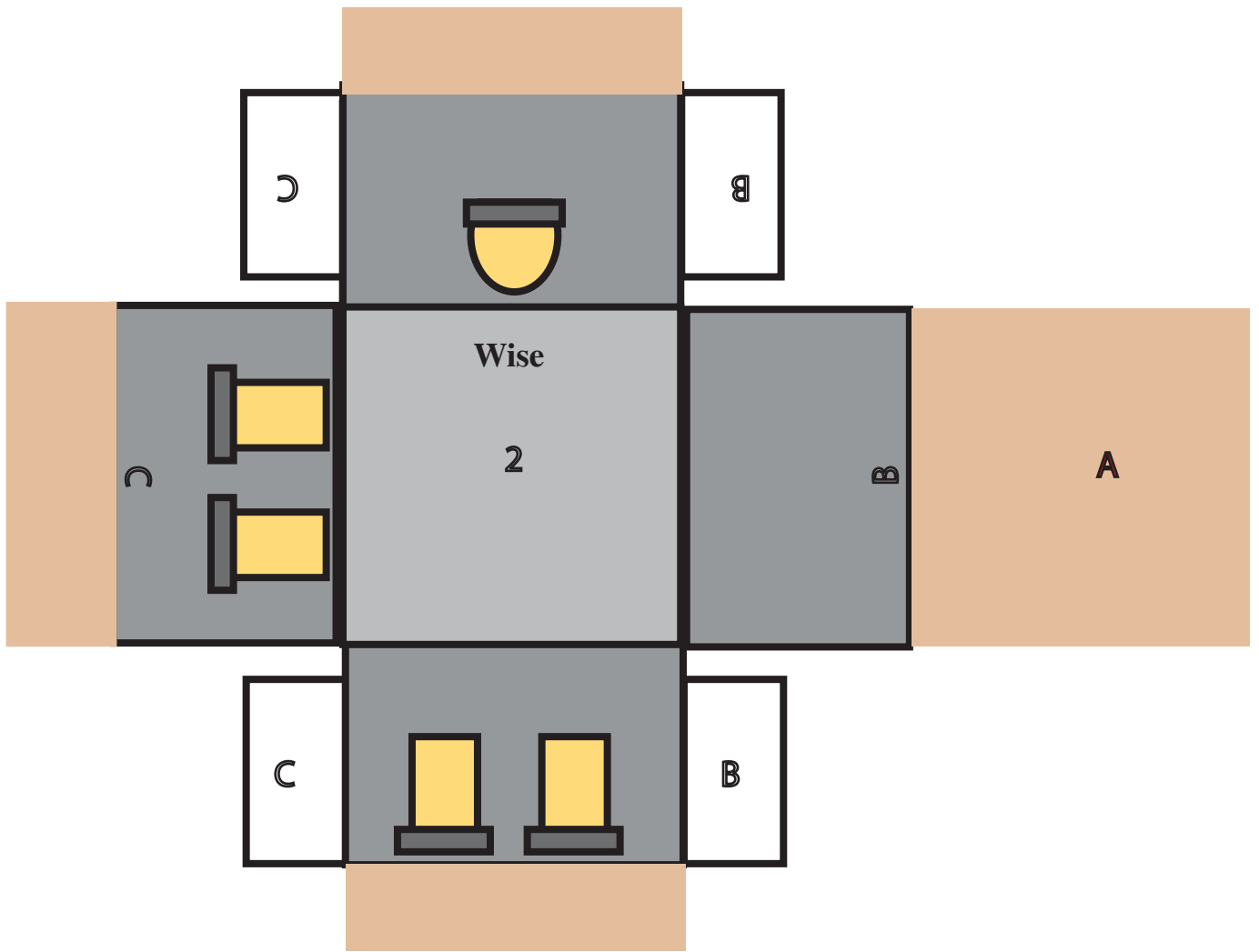
Mote & Beam



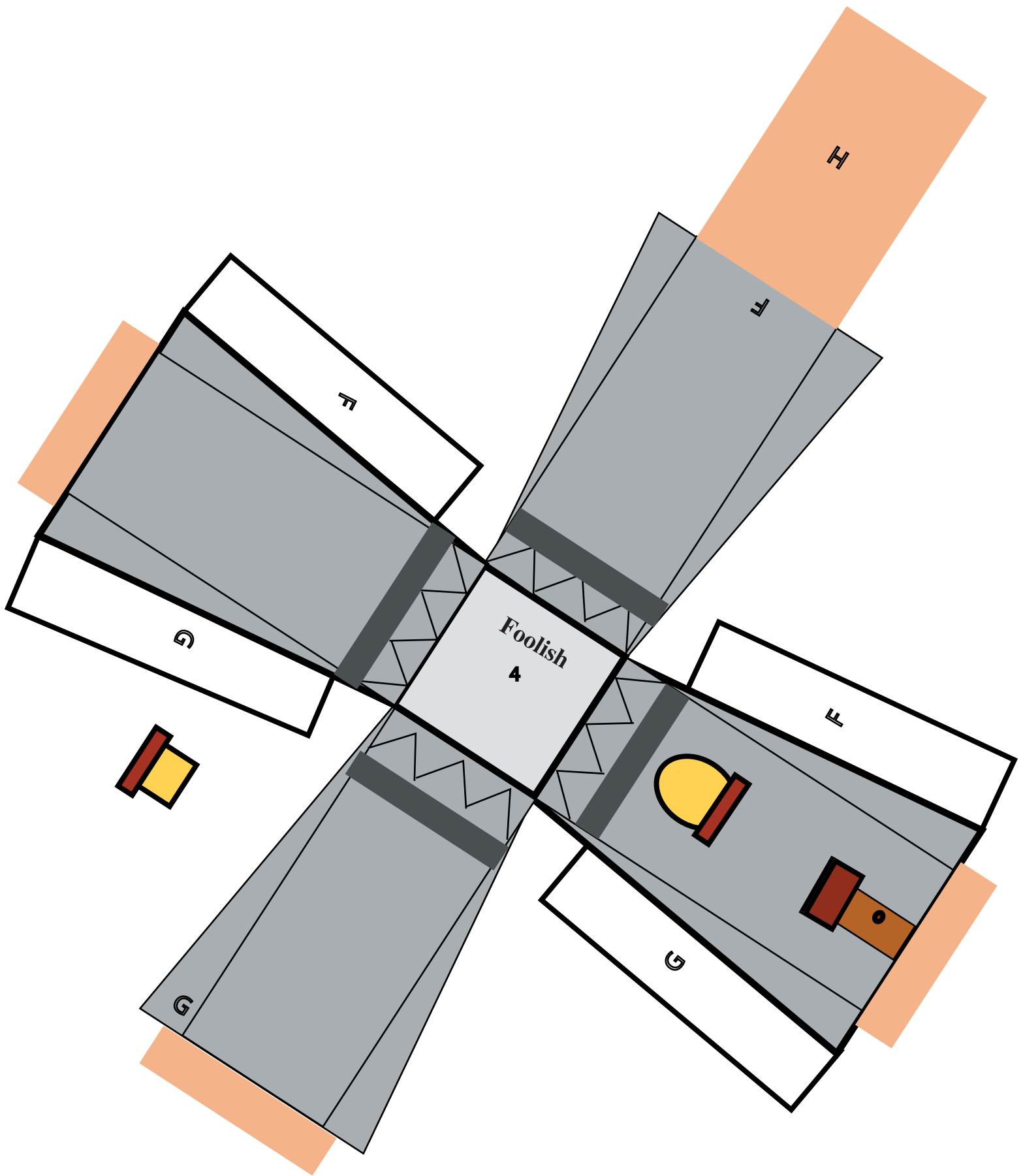
Houses: Fold heavy black lines inside (toward the blank side).
 Fold all tan tabs out (toward printed side). Leave red lines flat.



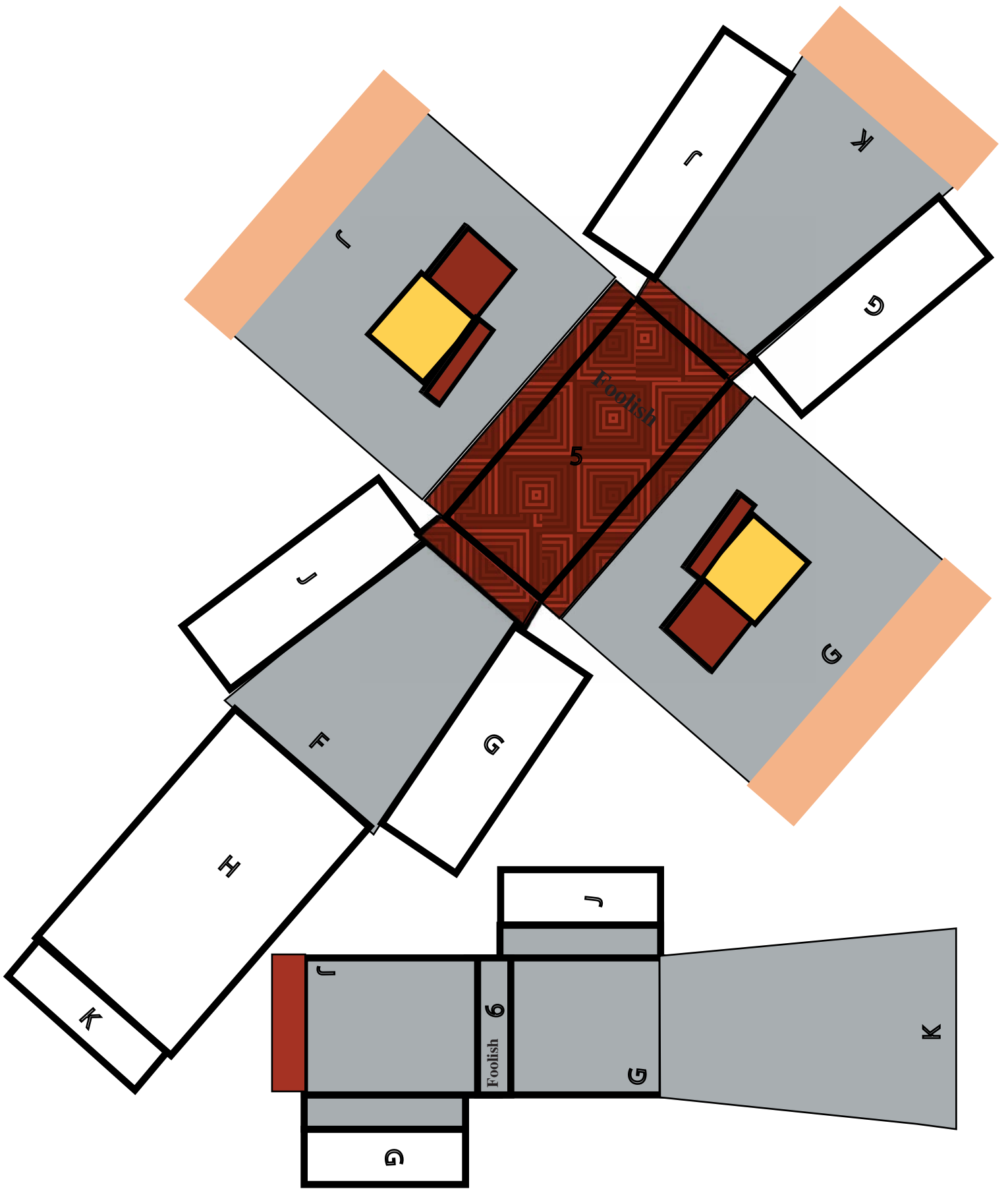
Built Upon a Rock



Built Upon a Rock



Built Upon a Rock



Built Upon a Rock