

Come, Follow Me  
with  
*Living Scriptures*  
STREAMING

## Dedicating a Temple

Doctrine & Covenants 109-110

### Objectives:

- Learn about the Kirtland Temple dedication and the restoration of the sealing power.

### Reinforces Principles of:

- Sealing Power
- Temples

## Reverence Time

**Song:** The Spirit of God, Hymn #2

<https://www.churchofjesuschrist.org/music/library/hymns/the-spirit-of-god?lang=eng>

**Scripture:** Doctrine & Covenants 109:78-80

“O hear, O hear, O hear us, O Lord! And answer these petitions, and accept the dedication of this house unto thee, the work of our hands, which we have built unto thy name; And also this church, to put upon it thy name. And help us by the power of thy Spirit, that we may mingle our voices with those bright, shining seraphs around thy throne, with acclamations of praise, singing Hosanna to God and the Lamb! And let these, thine anointed ones, be clothed with salvation, and thy saints shout aloud for joy. Amen, and Amen.”

**Video:** Watch this week’s clip from the Living Scriptures Streaming Library. Find the clip at <https://www.livingscriptures.com/fhe-lesson-hosanna>

### Lesson

#### Summary:

After four long years of hard work and sacrifice, the Kirtland Temple was finally ready to be dedicated. Section 109 of the Doctrine & Covenants is the dedicatory prayer given by Joseph Smith in the Kirtland Temple on March 27, 1836. A special hymn was written for the occasion called "The Spirit of God." We still sing that hymn at temple dedications today. The spirit of God was felt by many at the dedication of the Kirtland temple and they were filled with joy. It was a very special experience.

A few days later, while Joseph Smith and Oliver Cowdery were praying in the Kirtland Temple, a vision opened to them. Moses, Elias, and Elijah appeared to them and restored special keys of the priesthood to gather Israel and seal families together for eternity.

---

#### Quote:

*"It is important to know why the Lord promised to send Elijah. Elijah was a great prophet with great power given him by God. He held the greatest power God gives to His children: he held the sealing power, the power to bind on earth and have it bound in heaven. God gave it to the Apostle Peter. And the Lord kept His promise to send Elijah. Elijah came to the Prophet Joseph Smith on April 3, 1836, just after the dedication of the Kirtland Temple, the first temple built after the Restoration of the gospel." Henry B. Eyring*

---

**Questions:** Why was it important for the Saints to build a temple?

How do temples bless us today?

Who was Elijah?

Why was it important for Elijah to return?

How can we turn our hearts to our fathers (ancestors)?

**Description:** Create a paper chain with heart shaped links and write the names of your immediate and extended family members on each link. Talk about how the sealing power of the priesthood can link us together.

**What you need:**

- A copy of the of the “Linking Family Members” pattern (artwork included with this lesson, optional: print on colored paper), scissors for each family member old enough to use them.

**Preparation:** 1. Print out several copies of the “Linking Family Members” pattern (at least one per family member).

**Activity:** Elijah appeared to Joseph Smith in the Kirtland Temple to restore the priesthood power needed to seal family members together for eternity. That means we can be eternally linked to our ancestors and our decedents, just like a long chain.

Hand out a printed pattern to each family member to cut and assemble. (Young children will need help from an older sibling or parent.) Follow the instructions below to cut heart shaped paper links that can be linked together to form a chain.

1. Cut on the pink lines. Discard the “copyright” strip. You should now have 4 identical rectangle sheets of paper.
2. Fold on the green dotted lines of each sheet (vertically).
3. Then fold on the yellow dotted lines of each sheet (horizontally). You should now have one folded edge on the left side, two folded edges on the bottom, and four edges on the right side and top.
4. Cut along the blue lines on each sheet. Unfold. Each family member should now have 4 heart shaped links.
5. To link two links together, vertically fold one link and feed it through a horizontally folded link. Repeat this process until you’ve reached the end of your chain. Secure the last link with a small piece of tape.
6. Write a name of a family member on each link. Start with immediate family members. Then add grandparents, aunts and uncles, cousins, etc. to fill the number of links you have made. (If you’d like to make more links, repeat the process above).
7. Display your paper chain where you can see it this week.

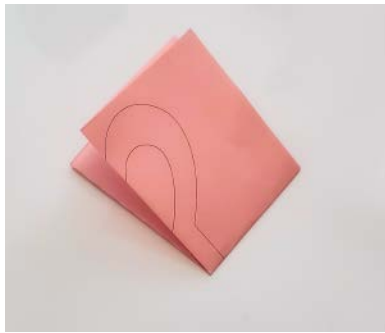
Step 1



Step 2



Step 3



Step 4

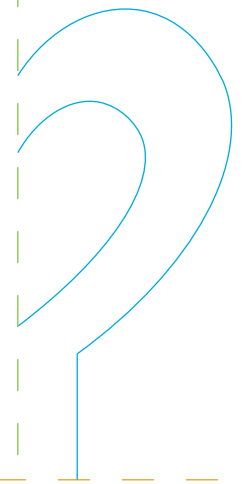
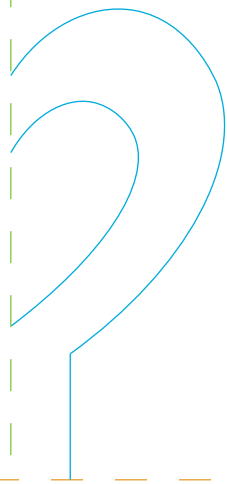
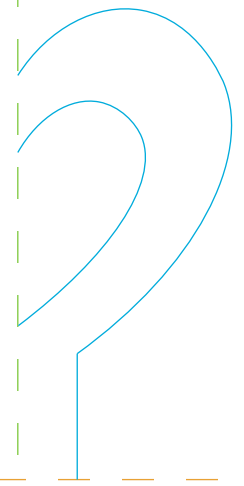
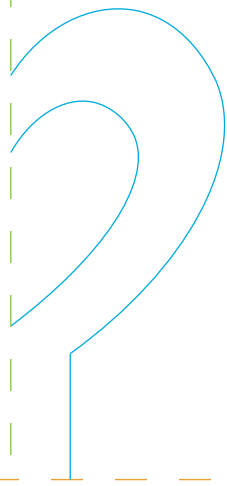


Step 5

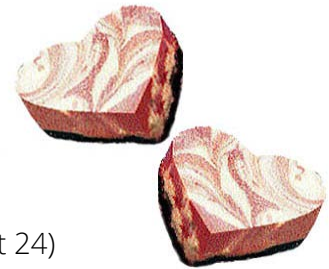


Step 6





**Prep Time:** 50 minutes  
**Chill Time:** At least 1 hour



**Ingredients:** 2 cups finely crushed chocolate sandwich cookies (about 24)  
3 tablespoons butter or margarine, melted  
3 (8-ounce) packages cream cheese, softened  
1 (14-ounce) can sweetened condensed milk  
3 eggs  
2 teaspoons vanilla extract  
1/2 cup white chocolate chips  
5 drops red food coloring

**Instructions:** Preheat oven to 300 degrees. Combine cookie crumbs and butter; press firmly on bottom of 9x13 inch baking pan. With mixer, beat cream cheese in a large bowl until fluffy. Gradually beat in sweetened condensed milk until smooth. Add eggs and vanilla; mix well. Pour half of the batter evenly over prepared crust.

Melt white chocolate chips in microwave for 30 seconds. Stir in food coloring. Heat for an additional 3 seconds and stir until completely melted. Stir melted chocolate chips into remaining batter; spoon over vanilla batter. With table knife or metal spatula, gently swirl chocolate batter through vanilla batter to marble. Bake 40 to 45 minutes or until set. Cool. Chill at least 1 hour.

Treat Time: Help children cut out individual servings with heart-shaped cookie cutter.

Optional: Share heart treats or recipe with grandparents or extended family members.