



Activity Time

Approximate Time: 15 minutes

What you need: A copy of “Nephi's Ship” for each child (art work included with this lesson), scissors & tape.

Preparation: 1. Have children cut out their ships. Cut along red dotted lines.
You will be folding along the green lines.

Activity: (Younger children will need help from an older sibling or parent.)
Ask and answer the questions as you teach your children how to build their ships.

1- What was Nephi commanded to build? (A ship)

Fold A to inside.

2- Who showed Nephi how to build the ship? (The Lord)

Fold B toward inside.

3- What did Nephi need to make tools to build the ship? (Ore)

Fold C toward inside.

4- Had Nephi ever built a ship before? (No)

Fold D toward inside.

5- Who mocked Nephi? (Laman & Lemuel)

Insert E into F. Fold flat and tape to hold.

6- What happened to Laman & Lemuel when they mocked Nephi for building the ship?
(Nephi stretched out his hand and the Lord shocked them.)

Fold G toward inside.

7- Did Laman & Lemuel repent and help Nephi build the ship? (Yes)

Fold H toward inside.

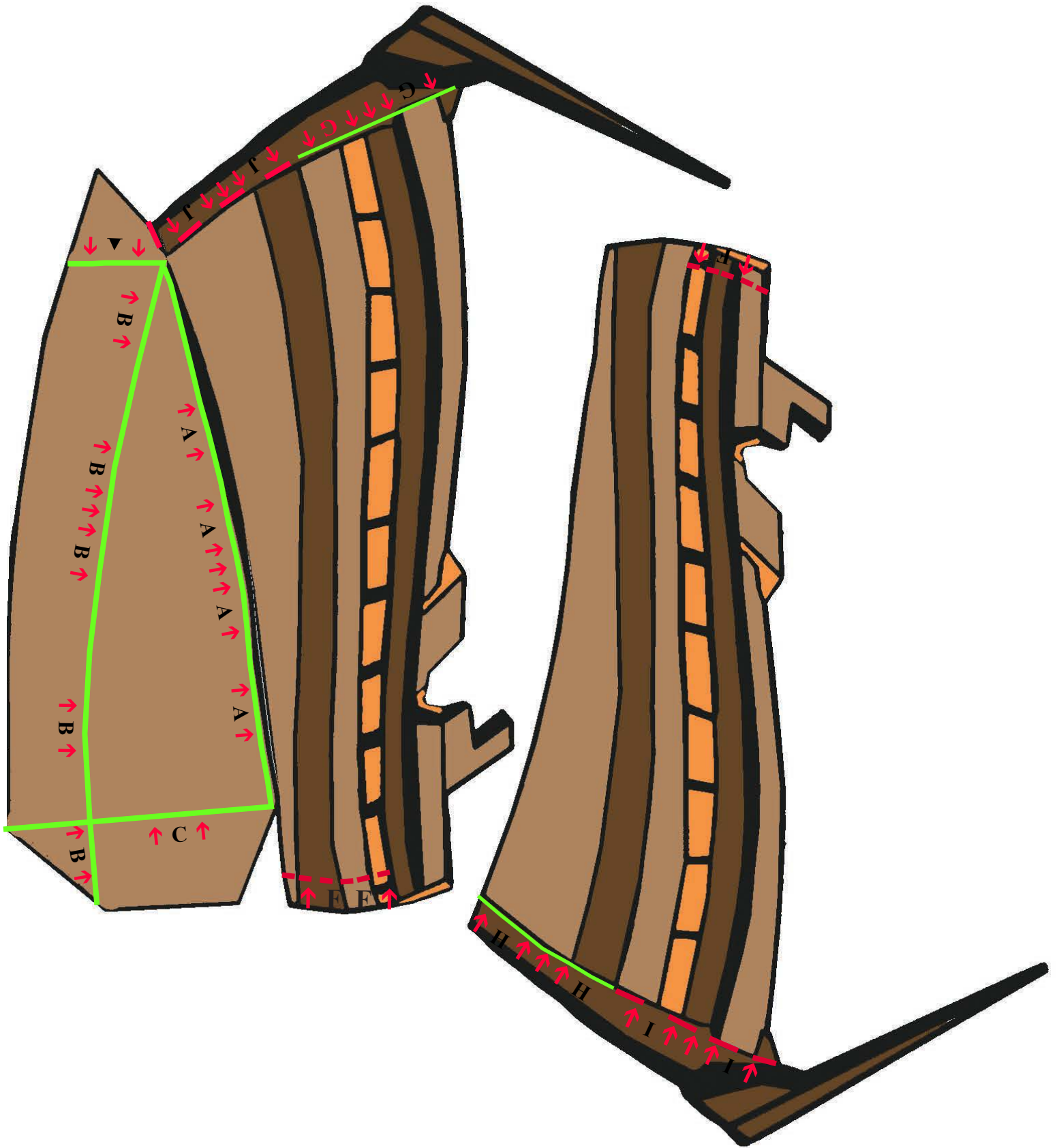
8- Why did the Lord want Nephi to build a ship? (So they could cross the water to the Promised Land.)

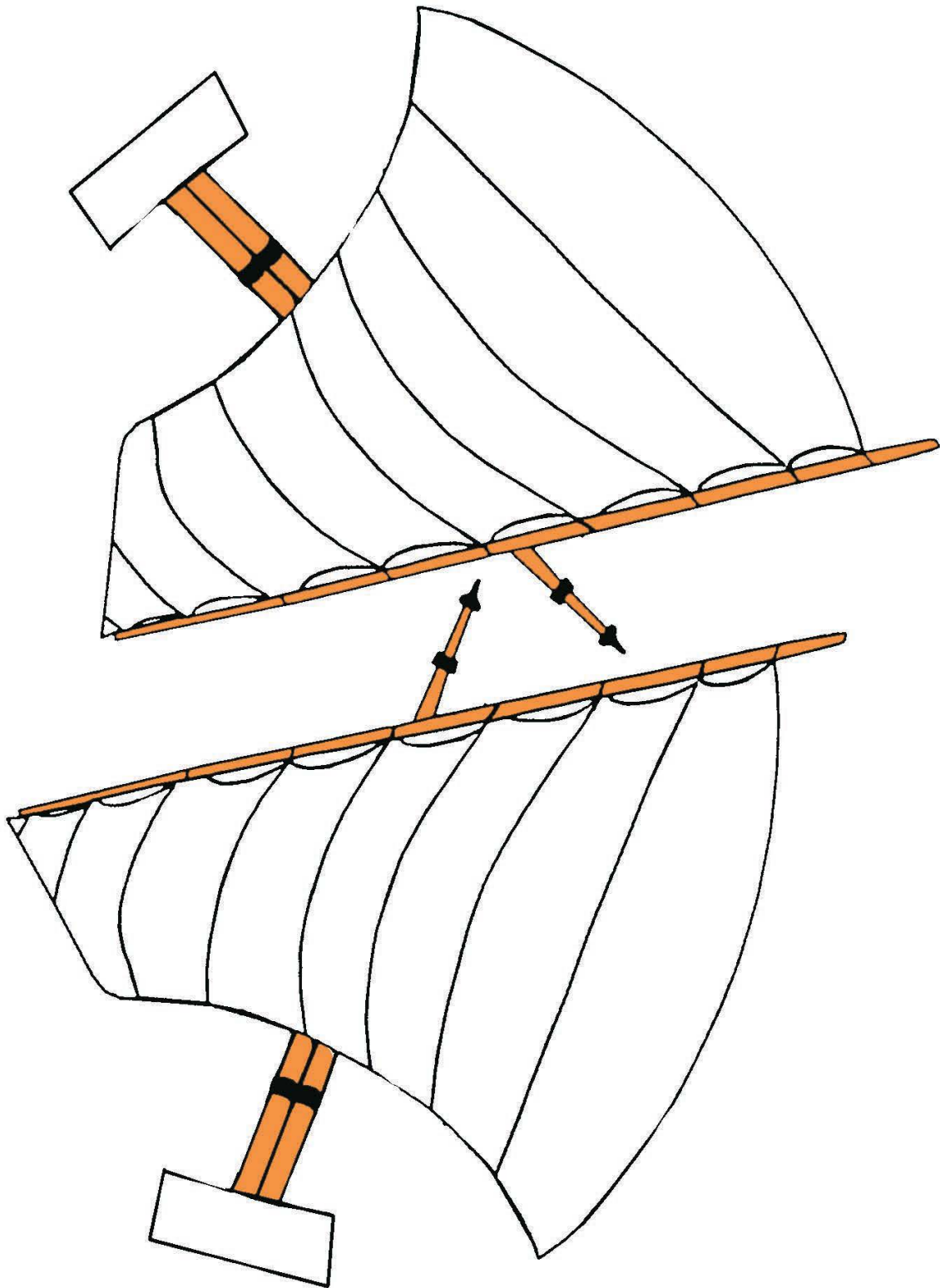
Insert I into J. Point on bow should point away from boat. Tape to hold.

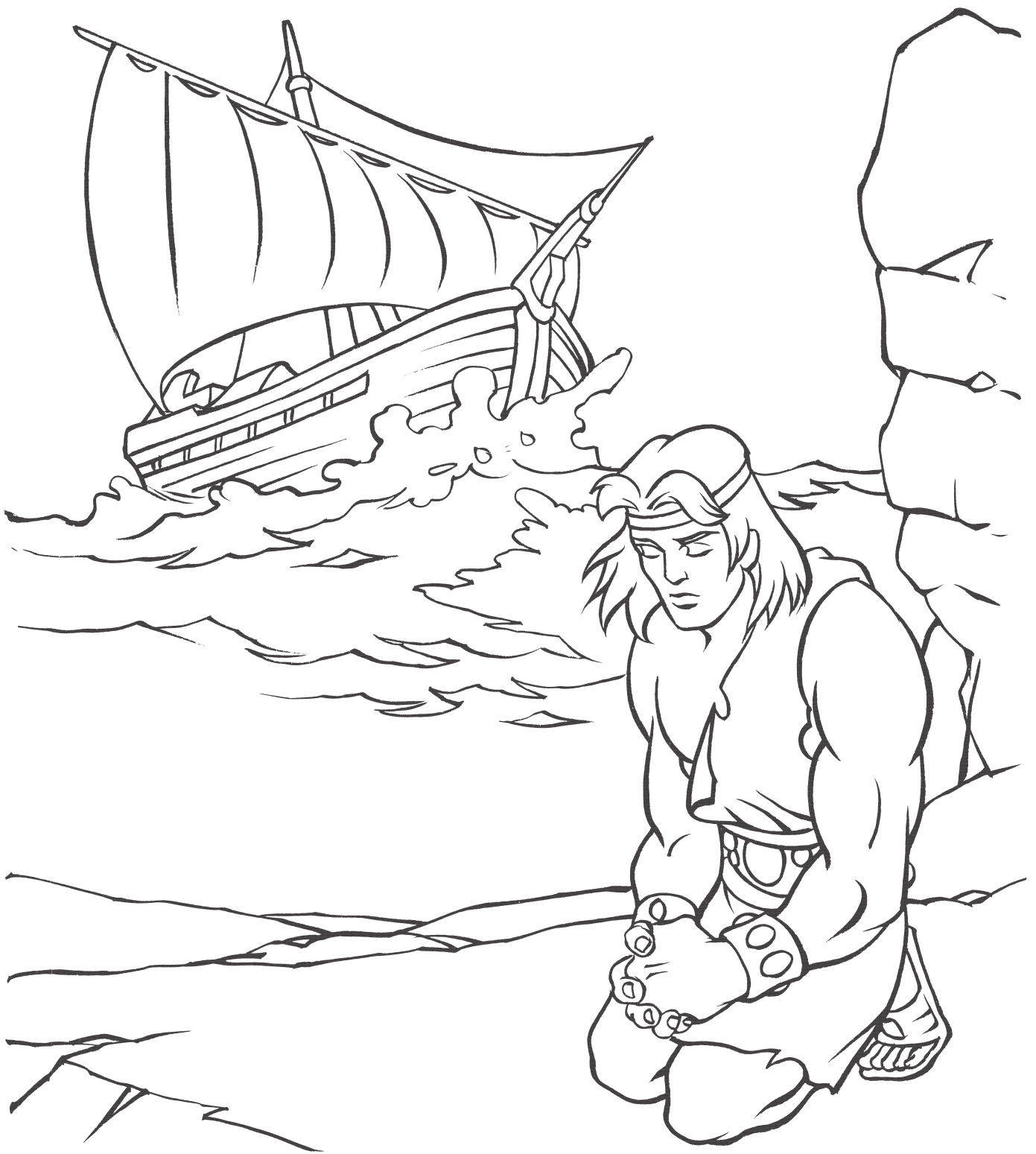
9- Why did Nephi know he could build a ship? (He had trust in the Lord.)

With printed sides facing out-tape sails together at mast.









**The Lord commands
Nephi to build a ship.**

1 Nephi 17:7-8

"JOURNEY TO THE PROMISED LAND" MATCHING GAME

Match the descriptions in the left-hand column with the correct person or item in the right-hand column.

- | | | | | |
|----|-----|--|----|------------------|
| 1. | ___ | Built a ship. | A. | JACOB |
| 2. | ___ | Directed Lehi and his family to the Promised Land. | B. | LORD |
| 3. | ___ | Born in the wilderness. | C. | LAMAN |
| 4. | ___ | Oldest son of Lehi. | D. | ISHMAEL'S FAMILY |
| 5. | ___ | Nephi's older righteous brother. | E. | LIAHONA |
| 6. | ___ | One of Lehi's rebellious sons. | F. | SAM |
| 7. | ___ | Accompanied Lehi's family to the Promised Land. | G. | LEMUEL |
| 8. | ___ | Told Nephi to build a ship. | H. | NEPHI |

(For additional help, see 1 Nephi 17-19)

JOURNEY TO THE PROMISED LAND - WORD SEARCH

L A I F P C Q B E L L O W S H E I B
 K E I U G N B O C A J T I N C H R L
 R N M Y K A L Y J N P B W O E A M O
 E O A U P M G O L D E N P L A T E S
 P D W R E A U F M O S W A V E S A Q
 E N H T N L R V Z F M R O T S I P W
 N A Y E N R U O J B D L Z O L C F I
 T L E A M H S I F O N E R D L I H C
 Q D I W T V N D G U J M W Y I G L K
 U E N A Y O R F P N Y N A R A N B E
 T S H O C K O V K T N L P R H S I D
 V I S M H R E L G I E F I E O M O N
 L M D P E M S P S F P I Q W N Z A E
 K O L W Y R I H A U H T K X A T H S
 M R O N B H Q K O L I D P U J P R S
 F P J X S T E P B Y S T E P L C G A

BELLOWS
 CHILDREN OF ISHMAEL
 GOLDEN PLATES
 JACOB
 JOURNEY
 LAMAN
 LAND OF BOUNTIFUL
 LEHI
 LEMUEL
 LIAHONA
 NEPHI
 ORE
 POWER OF GOD
 PROMISED LAND
 REPENT
 SAIL
 SAM
 SHIP
 SHOCK
 STEP BY STEP
 STORM
 TOOLS
 WAVES
 WICKEDNESS
 ZORAM